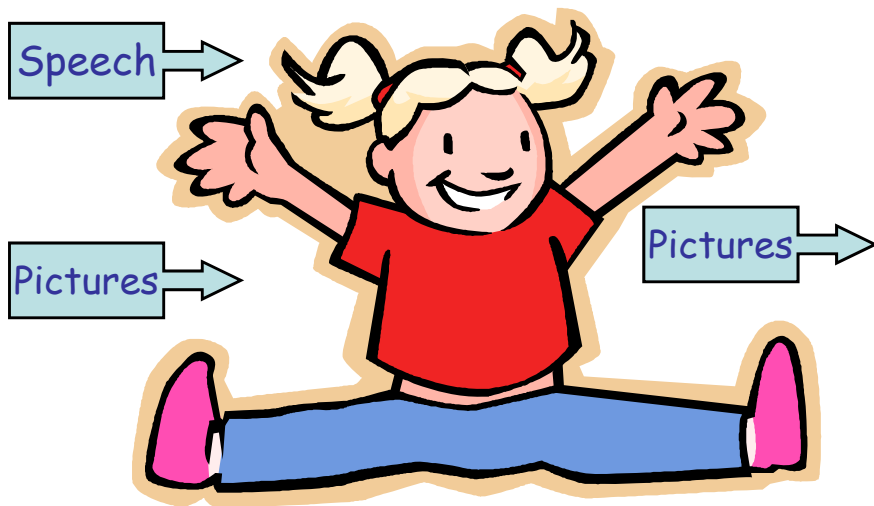


Partner Augmented Input



Build language skills by demonstrating use of AAC!

Copyright notification: User may not copy or distribute these materials except for use with the students, patients, clients, or other individuals who receive instruction, therapy, supervision, assessment, care or other services directly from the User. Otherwise, these materials may not be copied without the written consent of DynaVox Mayer-Johnson.

*Point to pictures while you are talking.**

- *Use parallel talk, self-talk, break down, build up.*
- *Produce a variety of communicative functions such as questions, comments, greetings, requests, etc.*
- *Use a large percentage of available vocabulary*
- *Use a large percentage of vocabulary as they appear in your speech*
- *80:20 ratio of statements to questions/commands*
- *Strive to provide Partner Augmented Input at least 80% of ongoing daily activities*
- *Use scripts to develop ideas*

* See references for sources